

**NOTICE!!**

**These documents have been scanned!**

**Do not place un-scanned documents beneath this notice!**

**Do not remove this notice from this file!**

GPO Jacket No. 560-102  
Print Order 61540  
Rise Business Services, LLC  
Job=AZ15 5/10/2019



Box Number= AZ15036



Claim Begin-End: AMC425391-AMC425391

1 Initial Receipt



AZ15036-15

AMC425096-AMC425592



**United States Department of the Interior**  
**Bureau of Land Management**  
 LANDS/RECREATION & PLANNING  
 ONE N CENTRAL AVE  
 PHOENIX, AZ 85004 -2203  
 Phone: 602-417-9200

**ENTERED**  
 NOV 18, 2013  
 BY: *[Signature]*

Receipt

No: 2906858

<b>Transaction #:</b> 2993625	
<b>Date of Transaction:</b> 11/07/2013	
CUSTOMER:	
FREEPORT MCMORAN MINERAL PROPERTIES 10861 N MAVINEE DR STE 141 ORO VALLEY, AZ 85737 US	

LINE #	QTY	DESCRIPTION	REMARKS	UNIT PRICE	TOTAL
1	1.00	LOCATABLE MINERALS / MINING CLAIMS-NEW, UNADJUD, ONE OR MORE AUTH NOS / NEW MINING CLAIM LOCATION FEE \$34 <b>CASES: AMC425391/\$34.00</b>		- n/a -	34.00
2	1.00	LOCATABLE MINERALS / MINING CLAIMS-NEW, UNADJUD, ONE OR MORE AUTH NOS / NEW MINING CLAIM PROCESSING FEE \$20 <b>CASES: AMC425391/\$20.00</b>		- n/a -	20.00
3	1.00	LOCATABLE MINERALS / MINING CLAIMS-NEW, UNADJUD, ONE OR MORE AUTH NOS / NEW MINING CLAIM MAINT FEE \$140 <b>CASES: AMC425391/\$140.00</b>		- n/a -	140.00
<b>TOTAL:</b>					<b>\$194.00</b>

PAYMENT INFORMATION			
1	AMOUNT:	194.00	POSTMARKED: N/A
	TYPE:	CHECK	RECEIVED: 11/07/2013
	CHECK NO:	0000803792	
	NAME:	FREEPORT MCMORAN COPPER & GOLD 333 N CENTRAL AVE PHOENIX AZ 85004 US	

REMARKS

This receipt was generated by the automated BLM Collections and Billing System and is a paper representation of a portion of the official electronic record contained therein.



**NOTICE!!**

**These documents have been scanned!**

**Do not place un-scanned documents beneath this notice!**

**Do not remove this notice from this file!**

GPO Jacket No. 560-102  
Print Order 61540  
Rise Business Services, LLC  
Job=AZ15 5/10/2019



Box Number= AZ15036



Claim Begin-End: AMC425391-AMC425391

2 Correspondence



AZ15036-15

AMC425096-AMC425592

**NO  
DOCUMENTS  
FOUND**

NO DOCUMENTS FOUND  
NO DOCUMENTS FOUND



**NOTICE!!**

**These documents have been scanned!**

**Do not place un-scanned documents beneath this notice!**

**Do not remove this notice from this file!**

GPO Jacket No. 560-102  
Print Order 61540  
Rise Business Services, LLC  
Job=AZ15 5/10/2019



Box Number= AZ15036



Claim Begin-End: AMC425391-AMC425391

3 Transfers



AZ15036-15

AMC425096-AMC425592



**NO  
DOCUMENTS  
FOUND**

NO DOCUMENTS FOUND  
NO DOCUMENTS FOUND



**NOTICE!!**

**These documents have been scanned!**

**Do not place un-scanned documents beneath this notice!**

**Do not remove this notice from this file!**

GPO Jacket No. 560-102  
Print Order 61540  
Rise Business Services, LLC  
Job=AZ15 5/10/2019



Box Number= AZ15036



Claim Begin-End: AMC425391-AMC425391

4 Miscellaneous



AZ15036-15

AMC425096-AMC425592



**NO  
DOCUMENTS  
FOUND**

NO DOCUMENTS FOUND  
NO DOCUMENTS FOUND



**NOTICE!!**

**These documents have been scanned!**

**Do not place un-scanned documents beneath this notice!**

**Do not remove this notice from this file!**

GPO Jacket No. 560-102  
Print Order 61540  
Rise Business Services, LLC  
Job=AZ15 5/10/2019



Box Number= AZ15036



Claim Begin-End: AMC425391-AMC425391

5 Annual Filings



AZ15036-15

AMC425096-AMC425592







# EXHIBIT A

County: Graham

State: AZ

BLM Serial #	Claim Name	Original Recording		Amended Recording		Location
		Recording #	Page #	Recording #	Page #	
AMC 389751	BRYCE-23	2008-01097				SEC10-T05S-R26E
AMC 389752	BRYCE-24	2008-01098				SEC10-T05S-R26E
AMC 389753	BRYCE-25	2008-01099				SEC10-T05S-R26E
AMC 389774	BRYCE-155	2008-01079				SEC08-T05S-R26E
AMC 389775	BRYCE-154	2008-01078				SEC08-T05S-R26E
AMC 389776	BRYCE-153	2008-01077				SEC08-T05S-R26E
AMC 389777	BRYCE-152	2008-01076				SEC08-T05S-R26E
AMC 389778	BRYCE-151	2008-01075				SEC08-T05S-R26E
AMC 389779	BRYCE-150	2008-01074				SEC08-T05S-R26E
AMC 389780	BRYCE-149	2008-01073				SEC08-T05S-R26E
AMC 389781	BRYCE-148	2008-01072				SEC08-T05S-R26E
AMC 389782	BRYCE-147	2008-01071				SEC08-T05S-R26E
AMC 389783	BRYCE-146	2008-01070				SEC08-T05S-R26E
AMC 389784	BRYCE-145	2008-01069				SEC08-T05S-R26E
AMC 389785	BRYCE-144	2008-01068				SEC08-T05S-R26E
AMC 389786	BRYCE-143	2008-01067				SEC08-T05S-R26E
AMC 389787	BRYCE-142	2008-01066				SEC08-T05S-R26E
AMC 389788	BRYCE-141	2008-01065				SEC08-T05S-R26E
AMC 389789	BRYCE-140	2008-01064				SEC08-T05S-R26E
AMC 389790	BRYCE-139	2008-01063				SEC08-T05S-R26E
AMC 389791	BRYCE-138	2008-01062				SEC08-T05S-R26E
AMC 389792	BRYCE-137	2008-01061				SEC05-T05S-R26E
AMC 389793	BRYCE-136	2008-01060				SEC05-T05S-R26E
AMC 389794	BRYCE-135	2008-01059				SEC05-T05S-R26E
AMC 389795	BRYCE-134	2008-01058				SEC05-T05S-R26E
AMC 389796	BRYCE-133	2008-01057				SEC05-T05S-R26E
AMC 389797	BRYCE-132	2008-01056				SEC05-T05S-R26E
AMC 389798	BRYCE-131	2008-01055				SEC05-T05S-R26E
AMC 389799	BRYCE-130	2008-01054				SEC05-T05S-R26E
AMC 389800	BRYCE-129	2008-01053				SEC05-T05S-R26E
AMC 389801	BRYCE-128	2008-01052				SEC05-T05S-R26E
AMC 389802	BRYCE-127	2008-01051				SEC05-T05S-R26E
AMC 389803	BRYCE-126	2008-01050				SEC05-T05S-R26E
AMC 389804	BRYCE-125	2008-01049				SEC05-T05S-R26E
AMC 389805	BRYCE-124	2008-01048				SEC05-T05S-R26E
AMC 389806	BRYCE-123	2008-01047				SEC05-T05S-R26E
AMC 389807	BRYCE-122	2008-01046				SEC05-T05S-R26E
AMC 389808	BRYCE-121	2008-01045				SEC05-T05S-R26E

Date: 10/30/2017

RECEIVED  
 PHOENIX, ARIZONA  
 JUN 21 10 17 AM 2018

# EXHIBIT A

County: Graham

State: AZ

BLM Serial #	Claim Name	Original Recording		Amended Recording		Location
		Recording #	Page #	Recording #	Page #	
T AMC 389809	BRYCE-120	2008-01044				SEC05-T05S-R26E
AMC 389810	BRYCE-119	2008-01043				SEC05-T05S-R26E
AMC 389811	BRYCE-118	2008-01042				SEC05-T05S-R26E
AMC 389812	BRYCE-117	2008-01041				SEC05-T05S-R26E
AMC 389813	BRYCE-116	2008-01040				SEC05-T05S-R26E
AMC 389814	BRYCE-115	2008-01039				SEC05-T05S-R26E
AMC 389815	BRYCE-114	2008-01038				SEC05-T05S-R26E
AMC 389816	BRYCE-113	2008-01037				SEC05-T05S-R26E
AMC 389817	BRYCE-112	2008-01036				SEC05-T05S-R26E
L AMC 389818	BRYCE-111	2008-01035				SEC05-T05S-R26E
L AMC 389823	BRYCE-104	2008-01030				SEC05-T05S-R26E
L AMC 389824	BRYCE-103	2008-01029				SEC05-T05S-R26E
— AMC 389826	BRYCE-101	2008-01027				SEC05-T05S-R26E
— AMC 389828	BRYCE-99	2008-01025				SEC04-T05S-R26E
— AMC 389830	BRYCE-97	2008-01023				SEC04-T05S-R26E
L AMC 389836	BRYCE-74	2008-01017				SEC09-T05S-R26E
AMC 389837	BRYCE-73	2008-01016				SEC09-T05S-R26E
AMC 389838	BRYCE-72	2008-01015				SEC09-T05S-R26E
AMC 389839	BRYCE-71	2008-01014				SEC09-T05S-R26E
AMC 389840	BRYCE-70	2008-01013				SEC09-T05S-R26E
AMC 389841	BRYCE-69	2008-01012				SEC08-T05S-R26E
AMC 389842	BRYCE-68	2008-01011				SEC08-T05S-R26E
L AMC 389843	BRYCE-67	2008-01010				SEC08-T05S-R26E
— AMC 389845	BRYCE-65	2008-01008				SEC09-T05S-R26E
— AMC 389847	BRYCE-63	2008-01006				SEC09-T05S-R26E
— AMC 389849	BRYCE-61	2008-01004				SEC09-T05S-R26E
— AMC 425391	BRYCE-66	2013-05408				SEC09-T05S-R26E
<b>No. Of Claims</b>	<b>65</b>					

RECEIVED  
2018 JUN 21 A 10:17  
PHOENIX, ARIZONA



**United States Department of the Interior**  
**Bureau of Land Management**  
 DIV OF LANDS, MINRLS & ENERGY  
 ONE N CENTRAL AVE  
 PHOENIX, AZ 85004 -4427  
 Phone: 602-417-9200

Receipt

No: 4194301

<b>Transaction #:</b> 4309072	
<b>Date of Transaction:</b> 06/21/2018	
<b>CUSTOMER:</b>	
FREEPORT MCMORAN INC 333 N CENTRAL AVE PHOENIX, AZ 85004-2121 US	

LINE #	QTY	DESCRIPTION	REMARKS	UNIT PRICE	TOTAL
1	1.00	LOCATABLE MINERALS / MINING CLAIMS- NOT NEW-UNADJUD, ONE AUTH NO. ONLY / MINING CLAIM MONEY RECEIVED CASES: AMC389751/\$10075.00	MAINT 2019/65	- n/a -	10075.00
<b>TOTAL:</b>					<b>\$10,075.00</b>

PAYMENT INFORMATION			
1	AMOUNT:	10075.00	POSTMARKED: N/A
	TYPE:	CHECK	RECEIVED: 06/21/2018
	CHECK NO:	0000899167	
	NAME:	FREEPORT MCMORAN INC 333 N CENTRAL AVE PHOENIX AZ 85004-2121 US	

REMARKS

This receipt was generated by the automated BLM Collections and Billing System and is a paper representation of a portion of the official electronic record contained therein.





## EXHIBIT A

County: Graham

State: AZ

<u>BLM Serial #</u>	<u>Claim Name</u>	<u>Original Recording</u>		<u>Amended Recording</u>		<u>Location</u>
		<u>Recording #</u>	<u>Page #</u>	<u>Recording #</u>	<u>Page #</u>	
AMC 389751	BRYCE-23	2008-01097				SEC10-T05S-R26E
AMC 389752	BRYCE-24	2008-01098				SEC10-T05S-R26E
AMC 389753	BRYCE-25	2008-01099				SEC10-T05S-R26E
AMC 389774	BRYCE-155	2008-01079				SEC08-T05S-R26E
AMC 389775	BRYCE-154	2008-01078				SEC08-T05S-R26E
AMC 389776	BRYCE-153	2008-01077				SEC08-T05S-R26E
AMC 389777	BRYCE-152	2008-01076				SEC08-T05S-R26E
AMC 389778	BRYCE-151	2008-01075				SEC08-T05S-R26E
AMC 389779	BRYCE-150	2008-01074				SEC08-T05S-R26E
AMC 389780	BRYCE-149	2008-01073				SEC08-T05S-R26E
AMC 389781	BRYCE-148	2008-01072				SEC08-T05S-R26E
AMC 389782	BRYCE-147	2008-01071				SEC08-T05S-R26E
AMC 389783	BRYCE-146	2008-01070				SEC08-T05S-R26E
AMC 389784	BRYCE-145	2008-01069				SEC08-T05S-R26E
AMC 389785	BRYCE-144	2008-01068				SEC08-T05S-R26E
AMC 389786	BRYCE-143	2008-01067				SEC08-T05S-R26E
AMC 389787	BRYCE-142	2008-01066				SEC08-T05S-R26E
AMC 389788	BRYCE-141	2008-01065				SEC08-T05S-R26E
AMC 389789	BRYCE-140	2008-01064				SEC08-T05S-R26E
AMC 389790	BRYCE-139	2008-01063				SEC08-T05S-R26E
AMC 389791	BRYCE-138	2008-01062				SEC08-T05S-R26E
AMC 389792	BRYCE-137	2008-01061				SEC05-T05S-R26E
AMC 389793	BRYCE-136	2008-01060				SEC05-T05S-R26E
AMC 389794	BRYCE-135	2008-01059				SEC05-T05S-R26E
AMC 389795	BRYCE-134	2008-01058				SEC05-T05S-R26E
AMC 389796	BRYCE-133	2008-01057				SEC05-T05S-R26E
AMC 389797	BRYCE-132	2008-01056				SEC05-T05S-R26E
AMC 389798	BRYCE-131	2008-01055				SEC05-T05S-R26E
AMC 389799	BRYCE-130	2008-01054				SEC05-T05S-R26E
AMC 389800	BRYCE-129	2008-01053				SEC05-T05S-R26E
AMC 389801	BRYCE-128	2008-01052				SEC05-T05S-R26E
AMC 389802	BRYCE-127	2008-01051				SEC05-T05S-R26E
AMC 389803	BRYCE-126	2008-01050				SEC05-T05S-R26E
AMC 389804	BRYCE-125	2008-01049				SEC05-T05S-R26E
AMC 389805	BRYCE-124	2008-01048				SEC05-T05S-R26E
AMC 389806	BRYCE-123	2008-01047				SEC05-T05S-R26E
AMC 389807	BRYCE-122	2008-01046				SEC05-T05S-R26E
AMC 389808	BRYCE-121	2008-01045				SEC05-T05S-R26E

Date: 2/13/2017

RECEIVED  
BLM AZ STATE OFFICE  
2017 JUN 20 A 11:03  
PHOENIX, ARIZONA

## EXHIBIT A

County: Graham

State: AZ

<u>BLM Serial #</u>	<u>Claim Name</u>	<u>Original Recording</u>		<u>Amended Recording</u>		<u>Location</u>
		<u>Recording #</u>	<u>Page #</u>	<u>Recording #</u>	<u>Page #</u>	
AMC 389809	BRYCE-120	2008-01044				SEC05-T05S-R26E
AMC 389810	BRYCE-119	2008-01043				SEC05-T05S-R26E
AMC 389811	BRYCE-118	2008-01042				SEC05-T05S-R26E
AMC 389812	BRYCE-117	2008-01041				SEC05-T05S-R26E
AMC 389813	BRYCE-116	2008-01040				SEC05-T05S-R26E
AMC 389814	BRYCE-115	2008-01039				SEC05-T05S-R26E
AMC 389815	BRYCE-114	2008-01038				SEC05-T05S-R26E
AMC 389816	BRYCE-113	2008-01037				SEC05-T05S-R26E
AMC 389817	BRYCE-112	2008-01036				SEC05-T05S-R26E
AMC 389818	BRYCE-111	2008-01035				SEC05-T05S-R26E
AMC 389823	BRYCE-104	2008-01030				SEC05-T05S-R26E
AMC 389824	BRYCE-103	2008-01029				SEC05-T05S-R26E
AMC 389826	BRYCE-101	2008-01027				SEC05-T05S-R26E
AMC 389828	BRYCE-99	2008-01025				SEC04-T05S-R26E
AMC 389830	BRYCE-97	2008-01023				SEC04-T05S-R26E
AMC 389836	BRYCE-74	2008-01017				SEC09-T05S-R26E
AMC 389837	BRYCE-73	2008-01016				SEC09-T05S-R26E
AMC 389838	BRYCE-72	2008-01015				SEC09-T05S-R26E
AMC 389839	BRYCE-71	2008-01014				SEC09-T05S-R26E
AMC 389840	BRYCE-70	2008-01013				SEC09-T05S-R26E
AMC 389841	BRYCE-69	2008-01012				SEC08-T05S-R26E
AMC 389842	BRYCE-68	2008-01011				SEC08-T05S-R26E
AMC 389843	BRYCE-67	2008-01010				SEC08-T05S-R26E
AMC 389845	BRYCE-65	2008-01008				SEC09-T05S-R26E
AMC 389847	BRYCE-63	2008-01006				SEC09-T05S-R26E
AMC 389849	BRYCE-61	2008-01004				SEC09-T05S-R26E
AMC 425391	BRYCE-66	2013-05408				SEC09-T05S-R26E
<b>No. Of Claims</b>	65					

RECEIVED  
BLM AZ STATE OFFICE  
2017 JUN 20 A 11:03  
PHOENIX, ARIZONA



**United States Department of the Interior**  
**Bureau of Land Management**  
 DIV OF LANDS, MINRLS & ENERGY  
 ONE N CENTRAL AVE  
 PHOENIX, AZ 85004 -4427  
 Phone: 602-417-9200

Receipt

No: 3866763

<b>Transaction #:</b> 3975712	
<b>Date of Transaction:</b> 06/20/2017	
<b>CUSTOMER:</b>	
FREEPORT MCMORAN INC 333 N CENTRAL AVE PHOENIX, AZ 85004-2121 US	

LINE #	QTY	DESCRIPTION	REMARKS	UNIT PRICE	TOTAL
1	1.00	LOCATABLE MINERALS / MINING CLAIMS- NOT NEW-UNADJUD, ONE AUTH NO. ONLY / MINING CLAIM MONEY RECEIVED CASES: AMC389751/\$10075.00	MAINT 2018/65	- n/a -	10075.00
<b>TOTAL:</b>					<b>\$10,075.00</b>

PAYMENT INFORMATION			
1	AMOUNT:	10075.00	POSTMARKED: N/A
	TYPE:	CHECK	RECEIVED: 06/20/2017
	CHECK NO:	0000878720	
	NAME:	FREEPORT MCMORAN INC 333 N CENTRAL AVE PHOENIX AZ 85004-2121 US	

REMARKS

This receipt was generated by the automated BLM Collections and Billing System and is a paper representation of a portion of the official electronic record contained therein.





# EXHIBIT A

County: Graham

State: AZ

<u>BLM Serial #</u>	<u>Claim Name</u>	<u>Original Recording</u>		<u>Amended Recording</u>		<u>Location</u>
		<u>Recording #</u>	<u>Page #</u>	<u>Recording #</u>	<u>Page #</u>	
AMC 389751	BRYCE-23	2008-01097				SEC10-T05S-R26E
AMC 389752	BRYCE-24	2008-01098				SEC10-T05S-R26E
AMC 389753	BRYCE-25	2008-01099				SEC10-T05S-R26E
AMC 389774	BRYCE-155	2008-01079				SEC08-T05S-R26E
AMC 389775	BRYCE-154	2008-01078				SEC08-T05S-R26E
AMC 389776	BRYCE-153	2008-01077				SEC08-T05S-R26E
AMC 389777	BRYCE-152	2008-01076				SEC08-T05S-R26E
AMC 389778	BRYCE-151	2008-01075				SEC08-T05S-R26E
AMC 389779	BRYCE-150	2008-01074				SEC08-T05S-R26E
AMC 389780	BRYCE-149	2008-01073				SEC08-T05S-R26E
AMC 389781	BRYCE-148	2008-01072				SEC08-T05S-R26E
AMC 389782	BRYCE-147	2008-01071				SEC08-T05S-R26E
AMC 389783	BRYCE-146	2008-01070				SEC08-T05S-R26E
AMC 389784	BRYCE-145	2008-01069				SEC08-T05S-R26E
AMC 389785	BRYCE-144	2008-01068				SEC08-T05S-R26E
AMC 389786	BRYCE-143	2008-01067				SEC08-T05S-R26E
AMC 389787	BRYCE-142	2008-01066				SEC08-T05S-R26E
AMC 389788	BRYCE-141	2008-01065				SEC08-T05S-R26E
AMC 389789	BRYCE-140	2008-01064				SEC08-T05S-R26E
AMC 389790	BRYCE-139	2008-01063				SEC08-T05S-R26E
AMC 389791	BRYCE-138	2008-01062				SEC08-T05S-R26E
AMC 389792	BRYCE-137	2008-01061				SEC05-T05S-R26E
AMC 389793	BRYCE-136	2008-01060				SEC05-T05S-R26E
AMC 389794	BRYCE-135	2008-01059				SEC05-T05S-R26E
AMC 389795	BRYCE-134	2008-01058				SEC05-T05S-R26E
AMC 389796	BRYCE-133	2008-01057				SEC05-T05S-R26E
AMC 389797	BRYCE-132	2008-01056				SEC05-T05S-R26E
AMC 389798	BRYCE-131	2008-01055				SEC05-T05S-R26E
AMC 389799	BRYCE-130	2008-01054				SEC05-T05S-R26E
AMC 389800	BRYCE-129	2008-01053				SEC05-T05S-R26E
AMC 389801	BRYCE-128	2008-01052				SEC05-T05S-R26E
AMC 389802	BRYCE-127	2008-01051				SEC05-T05S-R26E
AMC 389803	BRYCE-126	2008-01050				SEC05-T05S-R26E
AMC 389804	BRYCE-125	2008-01049				SEC05-T05S-R26E
AMC 389805	BRYCE-124	2008-01048				SEC05-T05S-R26E
AMC 389806	BRYCE-123	2008-01047				SEC05-T05S-R26E
AMC 389807	BRYCE-122	2008-01046				SEC05-T05S-R26E
AMC 389808	BRYCE-121	2008-01045				SEC05-T05S-R26E

Date: 6/9/2016

RECEIVED  
BLM AZ STATE OFFICE  
2016 AUG - 1 A 9 12  
PHOENIX, ARIZONA

## EXHIBIT A

County: Graham

State: AZ

BLM Serial #	Claim Name	Original Recording		Amended Recording		Location
		Recording #	Page #	Recording #	Page #	
AMC 389809	BRYCE-120	2008-01044				SEC05-T05S-R26E
AMC 389810	BRYCE-119	2008-01043				SEC05-T05S-R26E
AMC 389811	BRYCE-118	2008-01042				SEC05-T05S-R26E
AMC 389812	BRYCE-117	2008-01041				SEC05-T05S-R26E
AMC 389813	BRYCE-116	2008-01040				SEC05-T05S-R26E
AMC 389814	BRYCE-115	2008-01039				SEC05-T05S-R26E
AMC 389815	BRYCE-114	2008-01038				SEC05-T05S-R26E
AMC 389816	BRYCE-113	2008-01037				SEC05-T05S-R26E
AMC 389817	BRYCE-112	2008-01036				SEC05-T05S-R26E
AMC 389818	BRYCE-111	2008-01035				SEC05-T05S-R26E
AMC 389823	BRYCE-104	2008-01030				SEC05-T05S-R26E
AMC 389824	BRYCE-103	2008-01029				SEC05-T05S-R26E
AMC 389826	BRYCE-101	2008-01027				SEC05-T05S-R26E
AMC 389828	BRYCE-99	2008-01025				SEC04-T05S-R26E
AMC 389830	BRYCE-97	2008-01023				SEC04-T05S-R26E
AMC 389836	BRYCE-74	2008-01017				SEC09-T05S-R26E
AMC 389837	BRYCE-73	2008-01016				SEC09-T05S-R26E
AMC 389838	BRYCE-72	2008-01015				SEC09-T05S-R26E
AMC 389839	BRYCE-71	2008-01014				SEC09-T05S-R26E
AMC 389840	BRYCE-70	2008-01013				SEC09-T05S-R26E
AMC 389841	BRYCE-69	2008-01012				SEC08-T05S-R26E
AMC 389842	BRYCE-68	2008-01011				SEC08-T05S-R26E
AMC 389843	BRYCE-67	2008-01010				SEC08-T05S-R26E
AMC 389845	BRYCE-65	2008-01008				SEC09-T05S-R26E
AMC 389847	BRYCE-63	2008-01006				SEC09-T05S-R26E
AMC 389849	BRYCE-61	2008-01004				SEC09-T05S-R26E
AMC 425391	BRYCE-66	2013-05408				SEC09-T05S-R26E

No. Of Claims 65

PHOENIX, ARIZONA

2016 AUG - 1 A 9 12

Date: 6/9/2016

RECEIVED  
BLM AZ STATE OFFICE

Page 2



**United States Department of the Interior  
Bureau of Land Management  
DIV OF LANDS, MINRLS & ENERGY  
ONE N CENTRAL AVE  
PHOENIX, AZ 85004 -4427  
Phone: 602-417-9200**

Receipt

No: 3618323


<b>Transaction #:</b> 3721948	
<b>Date of Transaction:</b> 08/01/2016	
<b>CUSTOMER:</b>	
FREEPORT MCMORAN MINERAL PROPERTIES INC 333 N CENTRAL AVE PHOENIX, AZ 85004-2121 US	

LINE #	QTY	DESCRIPTION	REMARKS	UNIT PRICE	TOTAL
1	1.00	LOCATABLE MINERALS / MINING CLAIMS- NOT NEW-UNADJUD, ONE AUTH NO. ONLY / MINING CLAIM MONEY RECEIVED <b>CASES: AMC389751/\$10075.00</b>	MAINT 2017/65	- n/a -	10075.00
<b>TOTAL:</b>					<b>\$10,075.00</b>

PAYMENT INFORMATION					
1	AMOUNT:	10075.00	POSTMARKED:	N/A	
	TYPE:	CHECK	RECEIVED:	08/01/2016	
	CHECK NO:	0000862502			
	NAME:	FREEPORT MCMORAN INC 333 N CENTRAL AVE PHOENIX AZ 85004-2121 US			

REMARKS

This receipt was generated by the automated BLM Collections and Billing System and is a paper representation of a portion of the official electronic record contained therein.

**ENTERED**  
AUG -2 2016  
BY: 



## EXHIBIT A

County: Graham

State: AZ

BLM Serial #	Claim Name	Original Recording		Amended Recording		Location
		Recording #	Page #	Recording #	Page #	
AMC 389751	BRYCE-23	2008-01097				SEC10-T05S-R26E
AMC 389752	BRYCE-24	2008-01098				SEC10-T05S-R26E
AMC 389753	BRYCE-25	2008-01099				SEC10-T05S-R26E
AMC 389774	BRYCE-155	2008-01079				SEC08-T05S-R26E
AMC 389775	BRYCE-154	2008-01078				SEC08-T05S-R26E
AMC 389776	BRYCE-153	2008-01077				SEC08-T05S-R26E
AMC 389777	BRYCE-152	2008-01076				SEC08-T05S-R26E
AMC 389778	BRYCE-151	2008-01075				SEC08-T05S-R26E
AMC 389779	BRYCE-150	2008-01074				SEC08-T05S-R26E
AMC 389780	BRYCE-149	2008-01073				SEC08-T05S-R26E
AMC 389781	BRYCE-148	2008-01072				SEC08-T05S-R26E
AMC 389782	BRYCE-147	2008-01071				SEC08-T05S-R26E
AMC 389783	BRYCE-146	2008-01070				SEC08-T05S-R26E
AMC 389784	BRYCE-145	2008-01069				SEC08-T05S-R26E
AMC 389785	BRYCE-144	2008-01068				SEC08-T05S-R26E
AMC 389786	BRYCE-143	2008-01067				SEC08-T05S-R26E
AMC 389787	BRYCE-142	2008-01066				SEC08-T05S-R26E
AMC 389788	BRYCE-141	2008-01065				SEC08-T05S-R26E
AMC 389789	BRYCE-140	2008-01064				SEC08-T05S-R26E
AMC 389790	BRYCE-139	2008-01063				SEC08-T05S-R26E
AMC 389791	BRYCE-138	2008-01062				SEC08-T05S-R26E
AMC 389792	BRYCE-137	2008-01061				SEC05-T05S-R26E
AMC 389793	BRYCE-136	2008-01060				SEC05-T05S-R26E
AMC 389794	BRYCE-135	2008-01059				SEC05-T05S-R26E
AMC 389795	BRYCE-134	2008-01058				SEC05-T05S-R26E
AMC 389796	BRYCE-133	2008-01057				SEC05-T05S-R26E
AMC 389797	BRYCE-132	2008-01056				SEC05-T05S-R26E
AMC 389798	BRYCE-131	2008-01055				SEC05-T05S-R26E
AMC 389799	BRYCE-130	2008-01054				SEC05-T05S-R26E
AMC 389800	BRYCE-129	2008-01053				SEC05-T05S-R26E
AMC 389801	BRYCE-128	2008-01052				SEC05-T05S-R26E
AMC 389802	BRYCE-127	2008-01051				SEC05-T05S-R26E
AMC 389803	BRYCE-126	2008-01050				SEC05-T05S-R26E
AMC 389804	BRYCE-125	2008-01049				SEC05-T05S-R26E
AMC 389805	BRYCE-124	2008-01048				SEC05-T05S-R26E
AMC 389806	BRYCE-123	2008-01047				SEC05-T05S-R26E
AMC 389807	BRYCE-122	2008-01046				SEC05-T05S-R26E
AMC 389808	BRYCE-121	2008-01045				SEC05-T05S-R26E

Date: 3/17/2015

RECEIVED  
 M AZ STATE OFFICE  
 2015 JUL 22 P 1:46  
 PHOENIX, ARIZONA



## EXHIBIT A

County: Graham

State: AZ

BLM Serial#	Claim Name	Original Recording		Amended Recording		Location
		Recording #	Page #	Recording #	Page #	
✓ AMC 389809	BRYCE-120	2008-01044				SEC05-T05S-R26E
AMC 389810	BRYCE-119	2008-01043				SEC05-T05S-R26E
AMC 389811	BRYCE-118	2008-01042				SEC05-T05S-R26E
AMC 389812	BRYCE-117	2008-01041				SEC05-T05S-R26E
AMC 389813	BRYCE-116	2008-01040				SEC05-T05S-R26E
AMC 389814	BRYCE-115	2008-01039				SEC05-T05S-R26E
AMC 389815	BRYCE-114	2008-01038				SEC05-T05S-R26E
AMC 389816	BRYCE-113	2008-01037				SEC05-T05S-R26E
AMC 389817	BRYCE-112	2008-01036				SEC05-T05S-R26E
✓ AMC 389818	BRYCE-111	2008-01035				SEC05-T05S-R26E
✓ AMC 389823	BRYCE-104	2008-01030				SEC05-T05S-R26E
✓ AMC 389824	BRYCE-103	2008-01029				SEC05-T05S-R26E
✓ AMC 389826	BRYCE-101	2008-01027				SEC05-T05S-R26E
✓ AMC 389828	BRYCE-99	2008-01025				SEC04-T05S-R26E
✓ AMC 389830	BRYCE-97	2008-01023				SEC04-T05S-R26E
✓ AMC 389836	BRYCE-74	2008-01017				SEC09-T05S-R26E
AMC 389837	BRYCE-73	2008-01016				SEC09-T05S-R26E
AMC 389838	BRYCE-72	2008-01015				SEC09-T05S-R26E
AMC 389839	BRYCE-71	2008-01014				SEC09-T05S-R26E
AMC 389840	BRYCE-70	2008-01013				SEC09-T05S-R26E
AMC 389841	BRYCE-69	2008-01012				SEC08-T05S-R26E
AMC 389842	BRYCE-68	2008-01011				SEC08-T05S-R26E
✓ AMC 389843	BRYCE-67	2008-01010				SEC08-T05S-R26E
✓ AMC 389845	BRYCE-65	2008-01008				SEC09-T05S-R26E
✓ AMC 389847	BRYCE-63	2008-01006				SEC09-T05S-R26E
✓ AMC 389849	BRYCE-61	2008-01004				SEC09-T05S-R26E
✓ AMC 425391	BRYCE-66	2013-05408				SEC09-T05S-R26E
<b>No. Of Claims</b>		65				

PHOENIX, ARIZONA

2015 JUL 22 P 1:46

Date: 3/17/2015

Page 2

RECEIVED  
BLM AZ STATE OFFICE

**United States Department of the Interior  
Bureau of Land Management  
LANDS/RECREATION & PLANNING  
ONE N CENTRAL AVE  
PHOENIX, AZ 85004 -2203  
Phone: 602-417-9200**

Receipt

No: 3348299

<b>Transaction #:</b> 3446110
<b>Date of Transaction:</b> 07/22/2015
<b>CUSTOMER:</b>
FREEPORT-MCMORAN MINERAL PROPERTIES INC 333 N CENTRAL AVE PHOENIX, AZ 85004-2121 US

LINE #	QTY	DESCRIPTION	REMARKS	UNIT PRICE	TOTAL
1	1.00	LOCATABLE MINERALS / MINING CLAIMS- NOT NEW-UNADJUD, ONE AUTH NO. ONLY / MINING CLAIM MONEY RECEIVED CASES: AMC389751/\$10075.00	2016 MAINT (65)	- n/a -	10075.00
<b>TOTAL:</b>					<b>\$10,075.00</b>

PAYMENT INFORMATION					
1	AMOUNT:	10075.00	POSTMARKED:	N/A	
	TYPE:	CHECK	RECEIVED:	07/22/2015	
	CHECK NO:	0000842812			
	NAME:	FREEPORT-MCMORAN MINERAL PROPERTIES INC 333 N CENTRAL AVE PHOENIX AZ 85004-2121 US			

REMARKS

This receipt was generated by the automated BLM Collections and Billing System and is a paper representation of a portion of the official electronic record contained therein.

**ENTERED**  
JUL 23 2015  
BY: *R. [Signature]*





**EXHIBIT A**

County: Graham

State: AZ

Original Recording

Amended Recording

<u>BLM Serial #</u>	<u>Claim Name</u>	<u>Recording #</u>	<u>Page #</u>	<u>Recording #</u>	<u>Page #</u>	<u>Location</u>
AMC 389751	BRYCE-23	2008-01097				SEC10-T05S-R26E
AMC 389752	BRYCE-24	2008-01098				SEC10-T05S-R26E
AMC 389753	BRYCE-25	2008-01099				SEC10-T05S-R26E
AMC 389774	BRYCE-155	2008-01079				SEC08-T05S-R26E
AMC 389775	BRYCE-154	2008-01078				SEC08-T05S-R26E
AMC 389776	BRYCE-153	2008-01077				SEC08-T05S-R26E
AMC 389777	BRYCE-152	2008-01076				SEC08-T05S-R26E
AMC 389778	BRYCE-151	2008-01075				SEC08-T05S-R26E
AMC 389779	BRYCE-150	2008-01074				SEC08-T05S-R26E
AMC 389780	BRYCE-149	2008-01073				SEC08-T05S-R26E
AMC 389781	BRYCE-148	2008-01072				SEC08-T05S-R26E
AMC 389782	BRYCE-147	2008-01071				SEC08-T05S-R26E
AMC 389783	BRYCE-146	2008-01070				SEC08-T05S-R26E
AMC 389784	BRYCE-145	2008-01069				SEC08-T05S-R26E
AMC 389785	BRYCE-144	2008-01068				SEC08-T05S-R26E
AMC 389786	BRYCE-143	2008-01067				SEC08-T05S-R26E
AMC 389787	BRYCE-142	2008-01066				SEC08-T05S-R26E
AMC 389788	BRYCE-141	2008-01065				SEC08-T05S-R26E
AMC 389789	BRYCE-140	2008-01064				SEC08-T05S-R26E
AMC 389790	BRYCE-139	2008-01063				SEC08-T05S-R26E
AMC 389791	BRYCE-138	2008-01062				SEC08-T05S-R26E
AMC 389792	BRYCE-137	2008-01061				SEC05-T05S-R26E
AMC 389793	BRYCE-136	2008-01060				SEC05-T05S-R26E
AMC 389794	BRYCE-135	2008-01059				SEC05-T05S-R26E
AMC 389795	BRYCE-134	2008-01058				SEC05-T05S-R26E
AMC 389796	BRYCE-133	2008-01057				SEC05-T05S-R26E
AMC 389797	BRYCE-132	2008-01056				SEC05-T05S-R26E
AMC 389798	BRYCE-131	2008-01055				SEC05-T05S-R26E
AMC 389799	BRYCE-130	2008-01054				SEC05-T05S-R26E
AMC 389800	BRYCE-129	2008-01053				SEC05-T05S-R26E
AMC 389801	BRYCE-128	2008-01052				SEC05-T05S-R26E
AMC 389802	BRYCE-127	2008-01051				SEC05-T05S-R26E
AMC 389803	BRYCE-126	2008-01050				SEC05-T05S-R26E
AMC 389804	BRYCE-125	2008-01049				SEC05-T05S-R26E
AMC 389805	BRYCE-124	2008-01048				SEC05-T05S-R26E
AMC 389806	BRYCE-123	2008-01047				SEC05-T05S-R26E
AMC 389807	BRYCE-122	2008-01046				SEC05-T05S-R26E
AMC 389808	BRYCE-121	2008-01045				SEC05-T05S-R26E

Date: 1/23/2014

RECEIVED  
M AZ STATE OFFICE  
2014 AUG - 5 P 1: 32  
PHOENIX, ARIZONA

38/52

**EXHIBIT A**

County: Graham

State: AZ

Original Recording

Amended Recording

<u>BLM Serial #</u>	<u>Claim Name</u>	<u>Recording #</u>	<u>Page #</u>	<u>Recording #</u>	<u>Page #</u>	<u>Location</u>
— AMC 389809	BRYCE-120	2008-01044				SEC05-T05S-R26E
— AMC 389810	BRYCE-119	2008-01043				SEC05-T05S-R26E
— AMC 389811	BRYCE-118	2008-01042				SEC05-T05S-R26E
— AMC 389812	BRYCE-117	2008-01041				SEC05-T05S-R26E
— AMC 389813	BRYCE-116	2008-01040				SEC05-T05S-R26E
— AMC 389814	BRYCE-115	2008-01039				SEC05-T05S-R26E
— AMC 389815	BRYCE-114	2008-01038				SEC05-T05S-R26E
— AMC 389816	BRYCE-113	2008-01037				SEC05-T05S-R26E
— AMC 389817	BRYCE-112	2008-01036				SEC05-T05S-R26E
— AMC 389818	BRYCE-111	2008-01035				SEC05-T05S-R26E
— AMC 389823	BRYCE-104	2008-01030				SEC05-T05S-R26E
— AMC 389824	BRYCE-103	2008-01029				SEC05-T05S-R26E
— AMC 389826	BRYCE-101	2008-01027				SEC05-T05S-R26E
— AMC 389828	BRYCE-99	2008-01025				SEC04-T05S-R26E
— AMC 389830	BRYCE-97	2008-01023				SEC04-T05S-R26E
— AMC 389836	BRYCE-74	2008-01017				SEC09-T05S-R26E
— AMC 389837	BRYCE-73	2008-01016				SEC09-T05S-R26E
— AMC 389838	BRYCE-72	2008-01015				SEC09-T05S-R26E
— AMC 389839	BRYCE-71	2008-01014				SEC09-T05S-R26E
— AMC 389840	BRYCE-70	2008-01013				SEC09-T05S-R26E
— AMC 389841	BRYCE-69	2008-01012				SEC08-T05S-R26E
— AMC 389842	BRYCE-68	2008-01011				SEC08-T05S-R26E
— AMC 389843	BRYCE-67	2008-01010				SEC08-T05S-R26E
— AMC 389845	BRYCE-65	2008-01008				SEC09-T05S-R26E
— AMC 389847	BRYCE-63	2008-01006				SEC09-T05S-R26E
— AMC 389849	BRYCE-61	2008-01004				SEC09-T05S-R26E
— AMC 425391	BRYCE-66	2013-05408				SEC09-T05S-R26E

No. Of Claims

65

*bc*

*27/12*

PHOENIX, ARIZONA

2014 AUG - 5 P 1: 33

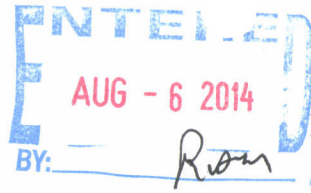
Date: 1/23/2014

Page 2

RECEIVED  
LM AZ STATE OFFICE



**United States Department of the Interior**  
**Bureau of Land Management**  
 LANDS/RECREATION & PLANNING  
 ONE N CENTRAL AVE  
 PHOENIX, AZ 85004 -2203  
 Phone: 602-417-9200



Receipt

No: 3093850

<b>Transaction #:</b> 3185307	
<b>Date of Transaction:</b> 08/05/2014	
CUSTOMER:	
FREEPORT-MCMORAN MINERAL PROPERTIES INC 333 N CENTRAL AVE PHOENIX, AZ 85004-2121 US	

LINE #	QTY	DESCRIPTION	REMARKS	UNIT PRICE	TOTAL
1	1.00	LOCATABLE MINERALS / MINING CLAIMS- NOT NEW-UNADJUD, ONE AUTH NO. ONLY / MINING CLAIM MONEY RECEIVED <b>CASES:</b> AMC389751/\$10075.00	MAINT (65) 2015	- n/a -	10075.00
<b>TOTAL:</b>					<b>\$10,075.00</b>

PAYMENT INFORMATION					
1	AMOUNT:	10075.00	POSTMARKED:	N/A	
	TYPE:	CHECK	RECEIVED:	08/05/2014	
	CHECK NO:	0000821963			
	NAME:	FREEPORT-MCMORAN MINERAL PROPERTIES INC 333 N CENTRAL AVE PHOENIX AZ 85004-2121 US			

REMARKS

This receipt was generated by the automated BLM Collections and Billing System and is a paper representation of a portion of the official electronic record contained therein.



**NOTICE!!**

**These documents have been scanned!**

**Do not place un-scanned documents beneath this notice!**

**Do not remove this notice from this file!**

GPO Jacket No. 560-102  
Print Order 61540  
Rise Business Services, LLC  
Job=AZ15 5/10/2019



Box Number= AZ15036



Claim Begin-End: AMC425391-AMC425391

6 Location Notices-Amendments and Supporting Documents



AZ15036-15

AMC425096-AMC425592



**MINING CLAIM STATUS REPORT**

DATA ENTERED 11/18/2013

MTP Checked by not 11/7/13  
GEO Checked by not

LEAD SERIAL NUMBER AMC 425391 thru AMC \_\_\_\_\_

# OF CLAIMS & TYPE	CHARGES
# <u>1</u> LODGE	Location Fee @ \$34 = \$ <u>34</u>
# _____ PLACER	Processing Fee @ \$15 = \$ <u>20</u>
# _____ ASSOCIATION PLACER	Maintenance Fee @ \$140 = \$ <u>140</u>
# _____ MILL SITE	Overage (+) \$ _____
# _____ TUNNEL SITE	Shortage (-) \$ _____
	Other Fees \$ _____
	<b>TOTAL \$ <u>194</u></b>

TOTAL CLAIM ACREAGE? 20

# OF LOCATORS? 1

DOCUMENTS RECEIVED VIA - TIMELY FILED?  
 Over-the-Counter () Mail ( ) Yes () No ( )

LEGAL DESCRIPTION - T 55 R 26E SEC 9  
 T \_\_\_\_\_ R \_\_\_\_\_ SEC \_\_\_\_\_  
 T \_\_\_\_\_ R \_\_\_\_\_ SEC \_\_\_\_\_  
 T \_\_\_\_\_ R \_\_\_\_\_ SEC \_\_\_\_\_

BLM () FOREST SERVICE ( ) \_\_\_\_\_ SUBJ TO PL 359: Yes ( ) No ()  
 WILDERNESS AREA: No () Yes ( ) \_\_\_\_\_

SPLIT ESTATE - N/A () SX ( ) PX ( ) SRHA ( ) OTHER ( ) \_\_\_\_\_  
 Proper Notice Filed if Located on SHRA Lands? N/A ( ) Yes ( ) No ( )

RECONVEYED MINERALS ON BLM LANDS REQUIRE OPENING ORDERS FROM 1944 TO 1993 -  
 Open to Entry on: \_\_\_\_\_ N/A ( )

COMMENTS/STATUS - VOID ( ) PARTIALLY VOID ( ) PVT MINERALS ( ) WITHDRAWN LANDS ( )  
 OTHER ( ) \_\_\_\_\_

Claimant acknowledges that portions of the following claims(s) site(s) may be void or voidable.

\_\_\_\_\_  
 Printed Name of Claimant \_\_\_\_\_ Signature of Claimant \_\_\_\_\_

\*\*\*\*\* FINAL ADJUDICATION \*\*\*\*\*

DATE 5/5/14 INITIALS AT

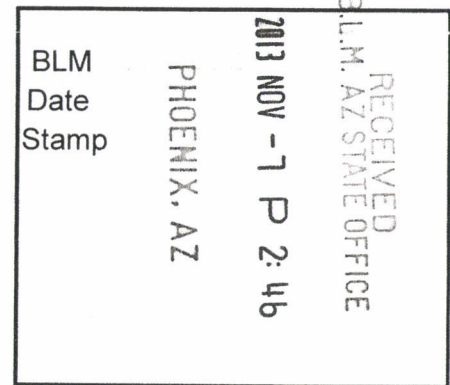
425391



Return to:  
Freeport-McMoRan Mineral Properties Inc.  
10861 N Mavinee Rd Suite 141  
Oro Valley, AZ 85737

**LOCATION NOTICE FOR LODE MINING CLAIM  
STATE OF ARIZONA, COUNTY OF GRAHAM**

**NOTICE IS HEREBY GIVEN** that the **BRYCE-66** lode mining claim has been located by Freeport-McMoRan Mineral Properties Inc, a Delaware corporation, whose current mailing address is 10861 N Mavinee Rd Suite 141 Oro Valley, AZ 85737.



The general course of this claim is **North to South** and it is situated in **Graham** County, Arizona. This claim is **1500** feet in length and **480** feet in width. This claim runs from the location monument on which this location notice is posted approximately **10** feet in a **Northerly** direction to the **North** end line and **1490** feet in a **Southerly** direction to the **South** end line. This claim is marked by six monuments, one at each corner and one at the center of each end line of the claim.

The location monument on which the notice is posted is situated within:

**Section 9, Township 5 South, Range 26 East**, Gila and Salt River Meridian, Graham County, Arizona and this claim encompasses portions of the following quarter section(s), section(s), Township(s) and Range(s): **Northwest ¼, Section 9, T5S-R26E, G&SRM, Graham County, Arizona.**

The locality of this claim with reference to some natural object or permanent monument and additional information (if any) concerning its locality is as follows:


**The Location Monument on which the notice is posted is 4490' North and 5040' West of the Southeast corner of Section 9, T5S-R26E**

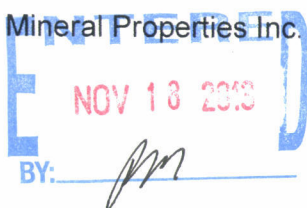
The undersigned claims the ground as described above and set forth on the attached 1" = 500' outline map. This claim is not intended to encroach on any private property or land that is not open for location.

Located, dated and posted on the ground this 19<sup>th</sup> day of October, 2013.

Freeport-McMoRan Mineral Properties Inc. (Owner)

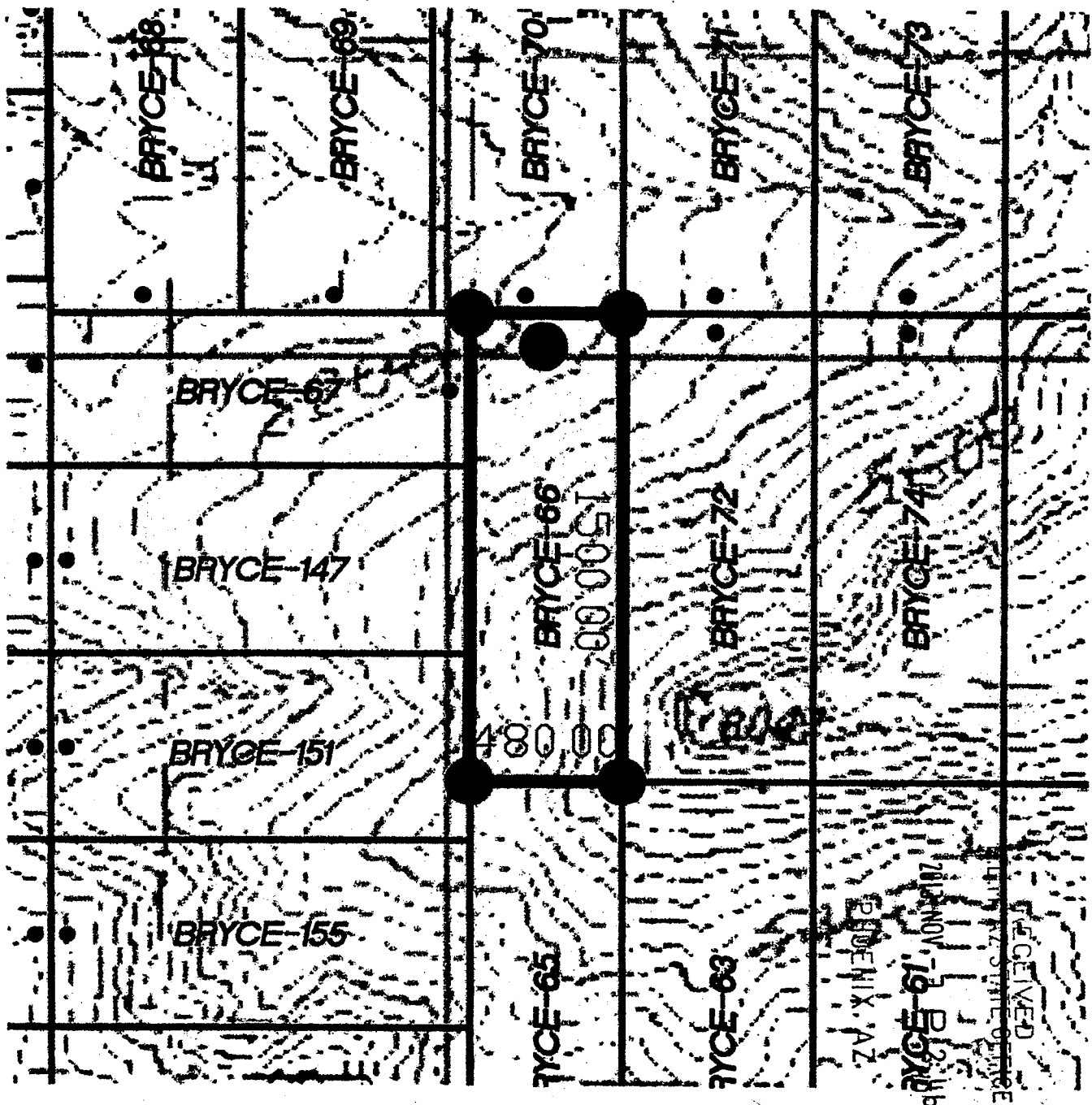
By:

  
GEOMETRIX, LLC (Agent)



2013-05-18

# MINING CLAIM MAP



  
 SCALE: 1" = 500'

1. THE ABOVE MAP DEPICTS THE BRYCE-66 MINING CLAIM, WHICH IS LOCATED IN THE NW, QUARTER OF SECTION 9, TOWNSHIP 5 SOUTH, RANGE 26 EAST, GILA AND SALT RIVER BASE AND MERIDIAN, GRAHAM COUNTY, ARIZONA.
2. THE TYPE OF CORNER AND LOCATION MONUMENTS USED ARE AS FOLLOWS:  
 = 2" X 2" X 5' WOOD POST.

RECEIVED  
 DEPT. OF STATE OFFICE  
 PHOENIX, AZ.  
 NOV 19 1966

AHC425391

RUN TIME: 02:40 PM

DEPARTMENT OF INTERIOR  
BUREAU OF LAND MANAGEMENT

RUN DATE: 11/07/2013

Input Parameters for Geographic Report with Land

System Id = CR

Admin State = AZ

Geo State =

Casetype =

Casetype Txt =

Case Disp Txt = AUTHORIZED, CANCELLED, EXPIRED, PENDING, REJECTED, RELINQUISHED, VOID, WITHDRAWN

Mer Twp Rng =

Mtrs = 14 0050S 0260E 009, 14 0050S 0260E 999

Commodity =

Commodity Txt =

Adm Agency Begins With

Total Rows Returned: 0

NO WARRANTY IS MADE BY BLM FOR USE OF THE DATA  
FOR PURPOSES NOT INTENDED BY BLM



